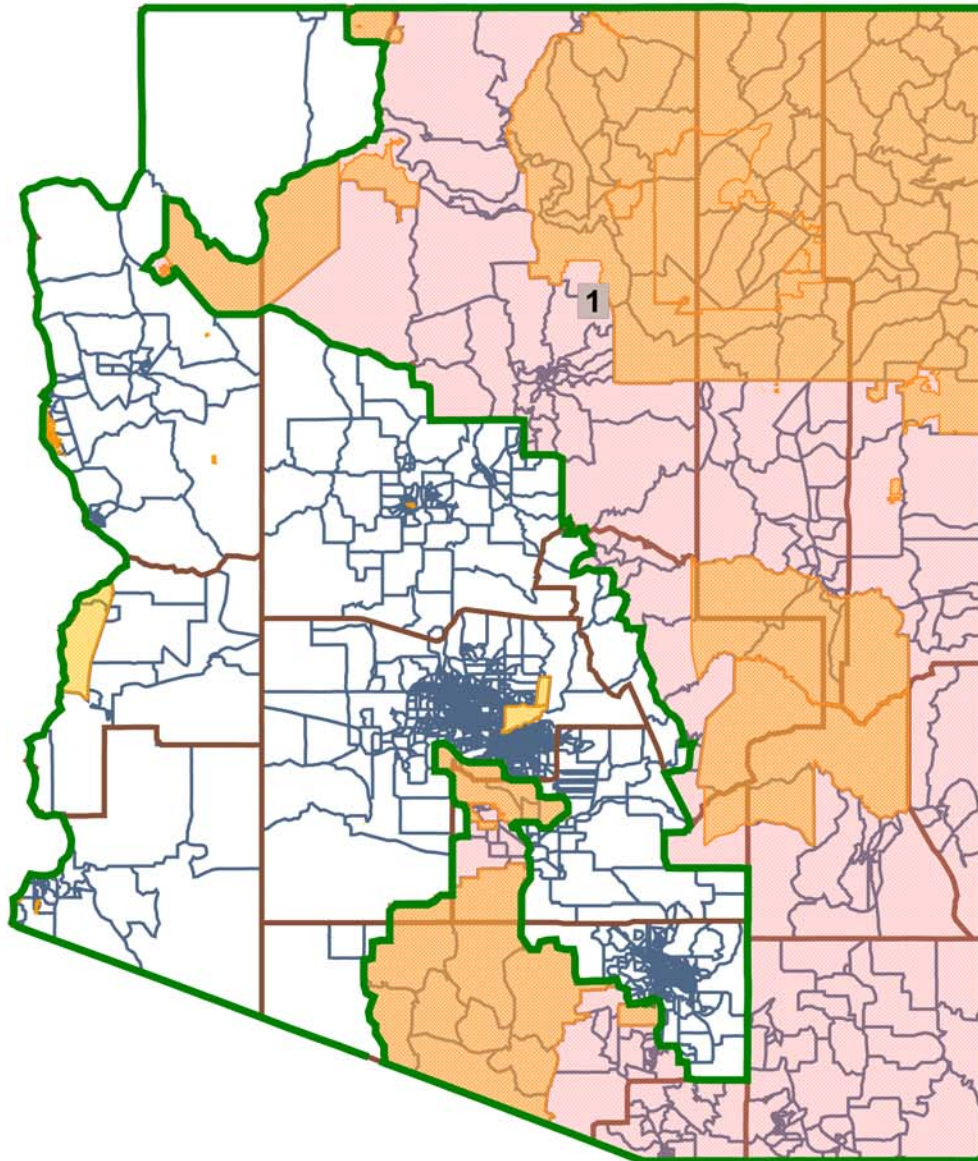
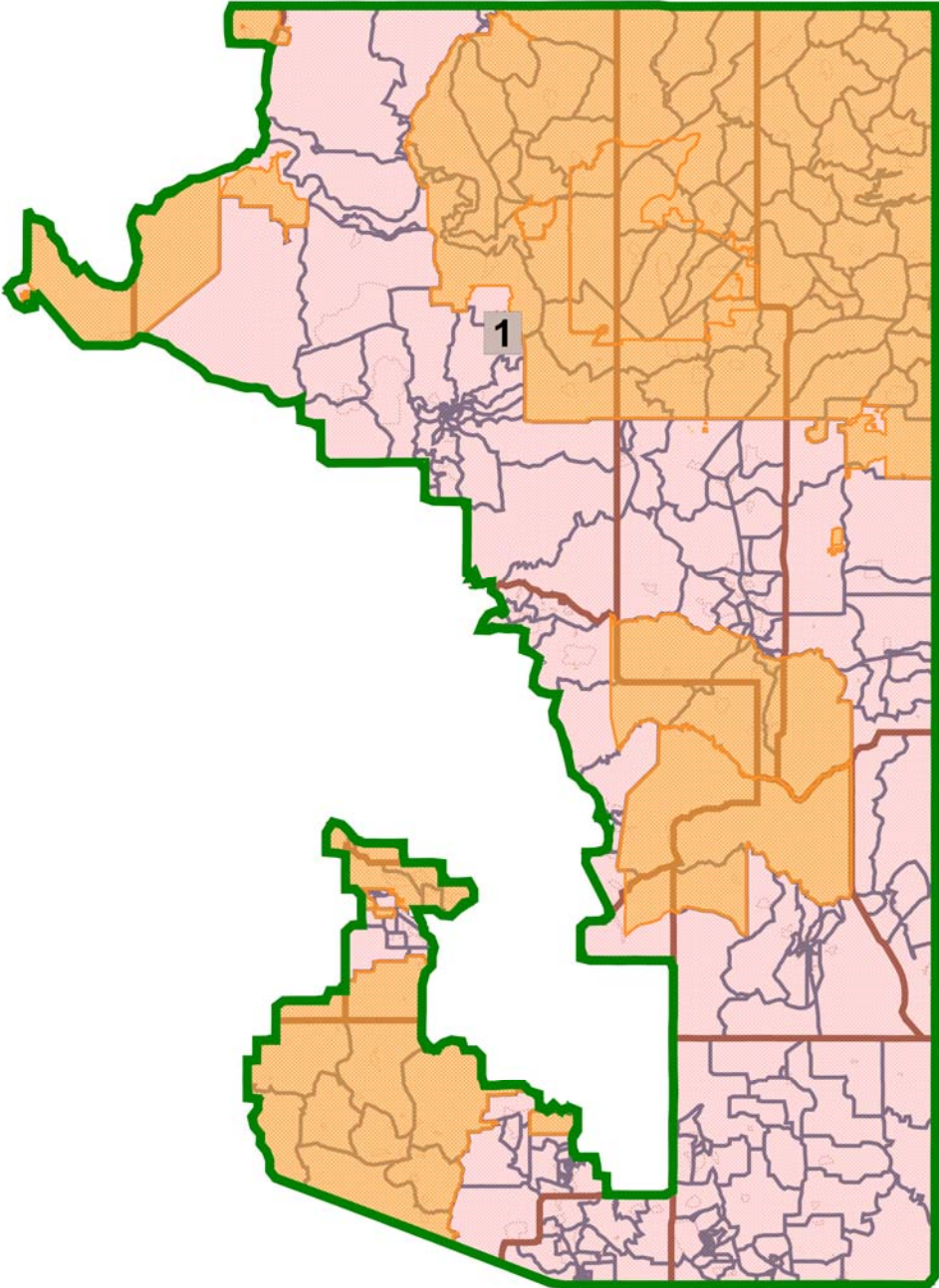


# Arizona Congressional District District 1 Navajo Nation Proposal NN1

Population: 709,763  
Deviation: -461  
%Deviation: -0.06%  
%American Indian Population: 25.01%



# Arizona Congressional District District: 1



Field	Value
District	1
Population	709763
Deviation	-461
% Deviation	-0.06%
White	433843
% White	61.13%
Black	14505
% Black	2.04%
AmIndian	177536
% AmIndian	25.01%
Hispanic Origin	169441
% Hispanic Origin	23.87%
Not Hispanic	540322
% Not Hispanic	76.13%
18+_Pop	522599
18+_Wht	342264
% 18+_Wht	65.49%
18+_Blk	10670
% 18+_Blk	2.04%
18+_Ind	116337
% 18+_Ind	22.26%

**Map layers**

- Census Place
- Voting District
- County
- Indian Reservation

**Census Place selection sets**

- Info

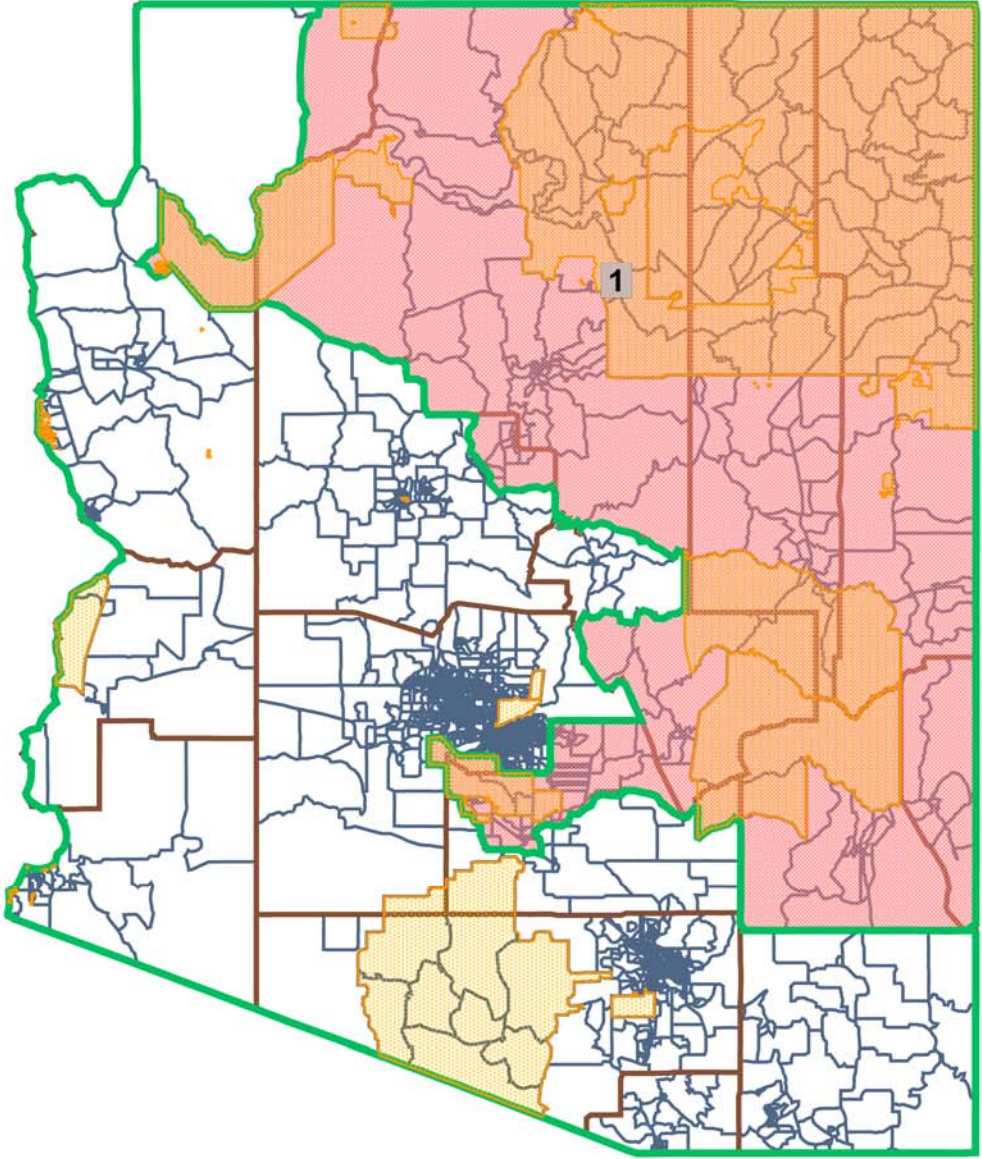
**AZ Congressional**

- District 1

0 33.3 66.7 100  
Miles

# ARIZONA CONGRESSIONAL DISTRICT District 1 Navajo Nation Proposal NN2

Population: 710,589  
Deviation: 365  
%Deviation: 0.05%  
%American Indian Population: 23.71%



**Map layers**

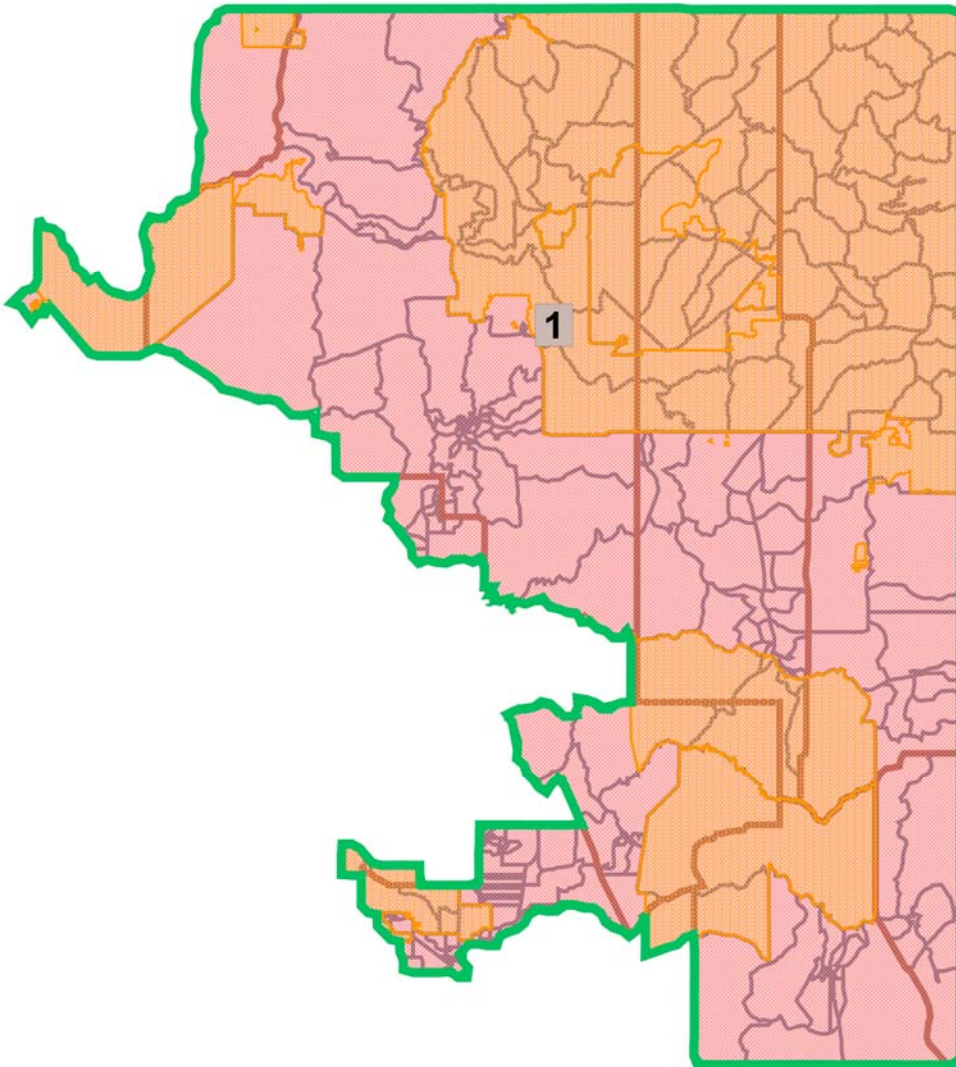
- Voting District
- County
- Indian Reservation

**Districts selection sets**

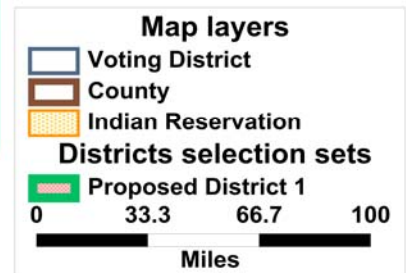
- Proposed District 1

0 30 60 90  
Miles

# Arizona Congressional District District: 1

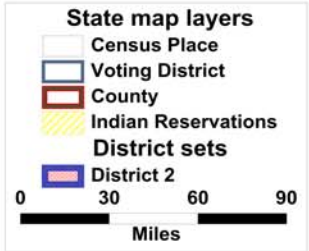
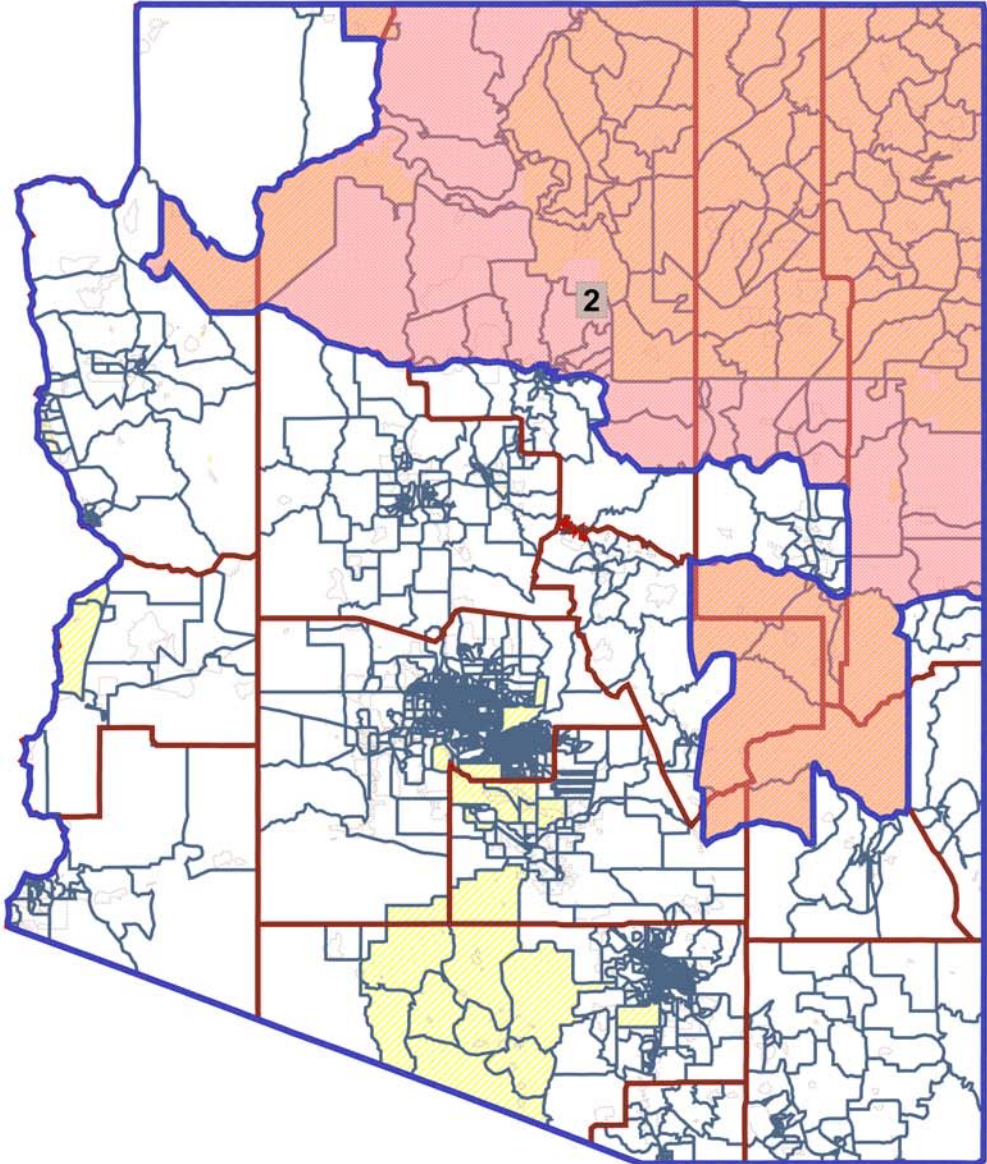


Field	Value
District	1
Population	710589
Deviation	365
% Deviation	0.05%
White	445225
% White	62.66%
Black	17043
% Black	2.4%
AmIndian	168504
% AmIndian	23.71%
Hispanic Origin	135537
% Hispanic Origin	19.07%
18+_Pop	512440
18+_Wht	342148
% 18+_Wht	66.77%
18+_Blk	11762
% 18+_Blk	2.3%
18+_Ind	110082
% 18+_Ind	21.48%
H18+_Pop	83785

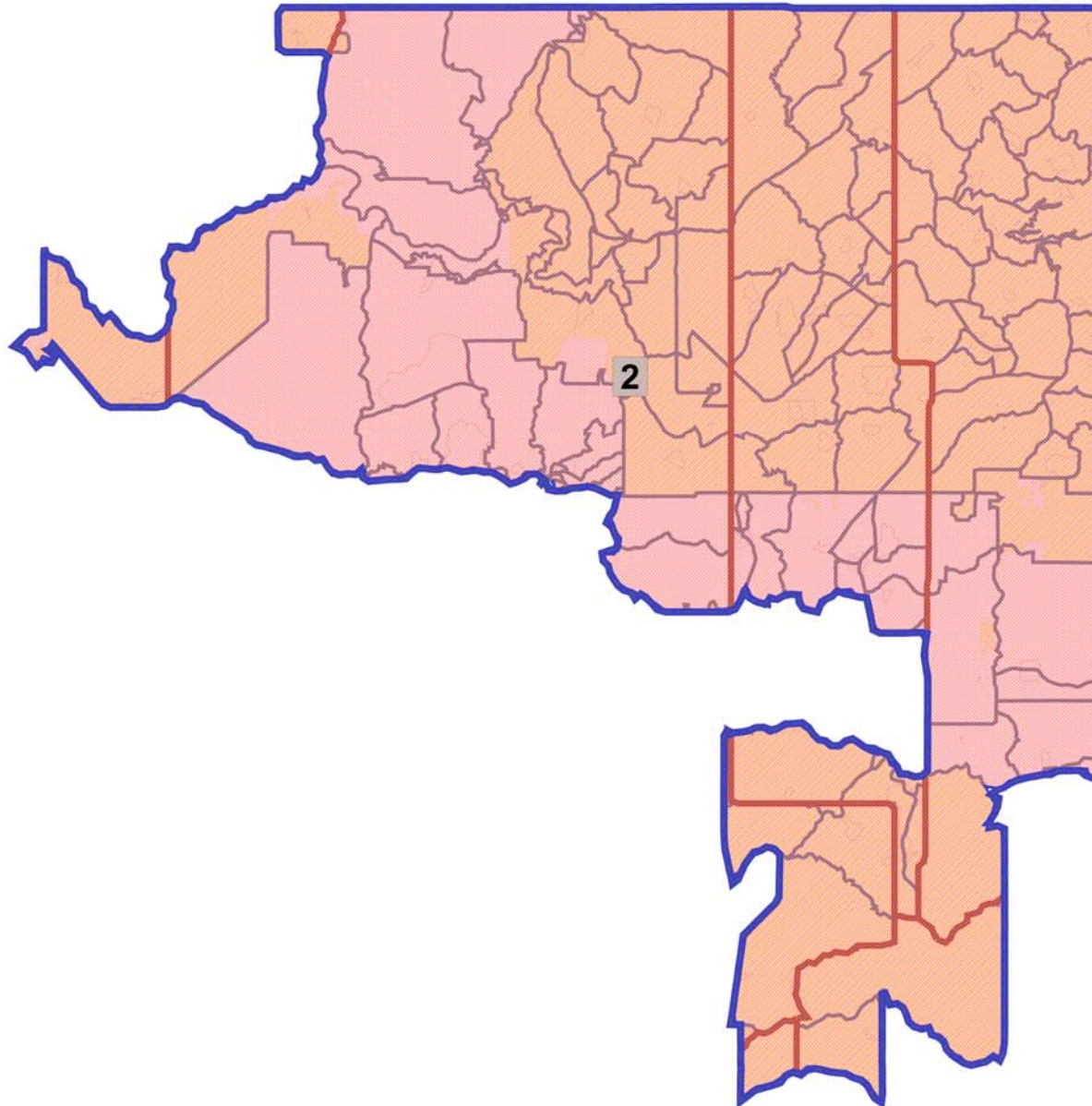


# Arizona Legislative District District 2 Navajo Nation Proposal

Population: 214,002  
Deviation: 935  
%Deviation: 0.44%  
%American Indian: 66.5%



# Arizona Legislative District District: 2



Field	Value
District	2
Population	214002
Deviation	935
% Deviation	0.44%
White	57874
% White	27.04%
Black	1458
% Black	0.68%
American Indian	142310
% American Indian	66.5%
Asian	1130
% Asian	0.53%
Hispanic Origin	18655
% Hispanic Origin	8.72%
18+ Pop	146493
18+ White	45234
% 18+ White	30.88%
18+ Black	1175
% 18+ Black	0.8%
18+ Indian	92907
% 18+ Indian	63.42%
H18+ Pop	11504
% H18+ Pop	7.85%

