

8/29/2011

## NEW MEXICO SENATE Proposed Native American Working Group Plan

### DISTRICT 1:

Population: 46,647

Deviation: -2,381

%Deviation: -4.86%

%American Indian Population: 23.71%

### DISTRICT 2:

Population: 47,227

Deviation: -1,801

%Deviation: -3.67%

%American Indian Population: 13.79%

### DISTRICT 3:

Population: 47,651

Deviation: -1,377

%Deviation: -2.81%

%American Indian Population: 84.82%

### DISTRICT 4:

Population: 47,842

Deviation: -1,186

%Deviation: -2.42%

%American Indian Population: 62.73%

### DISTRICT 22:

Population: 49,495

Deviation: 467

%Deviation: 0.95%

%American Indian Population: 65.44%

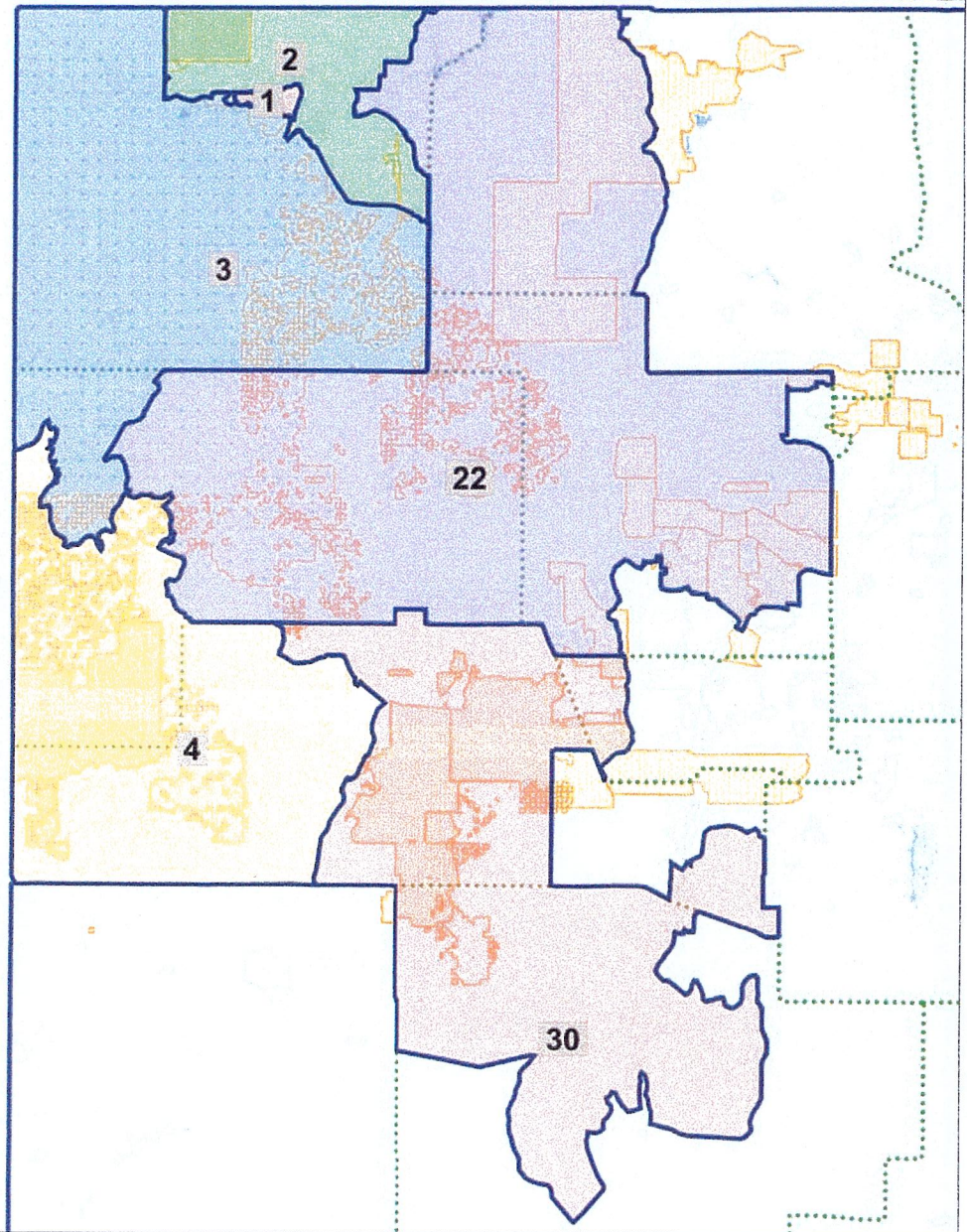
### DISTRICT 30:

Population: 47,354

Deviation: -1,674

%Deviation: -3.41%

%American Indian Population: 26.49%



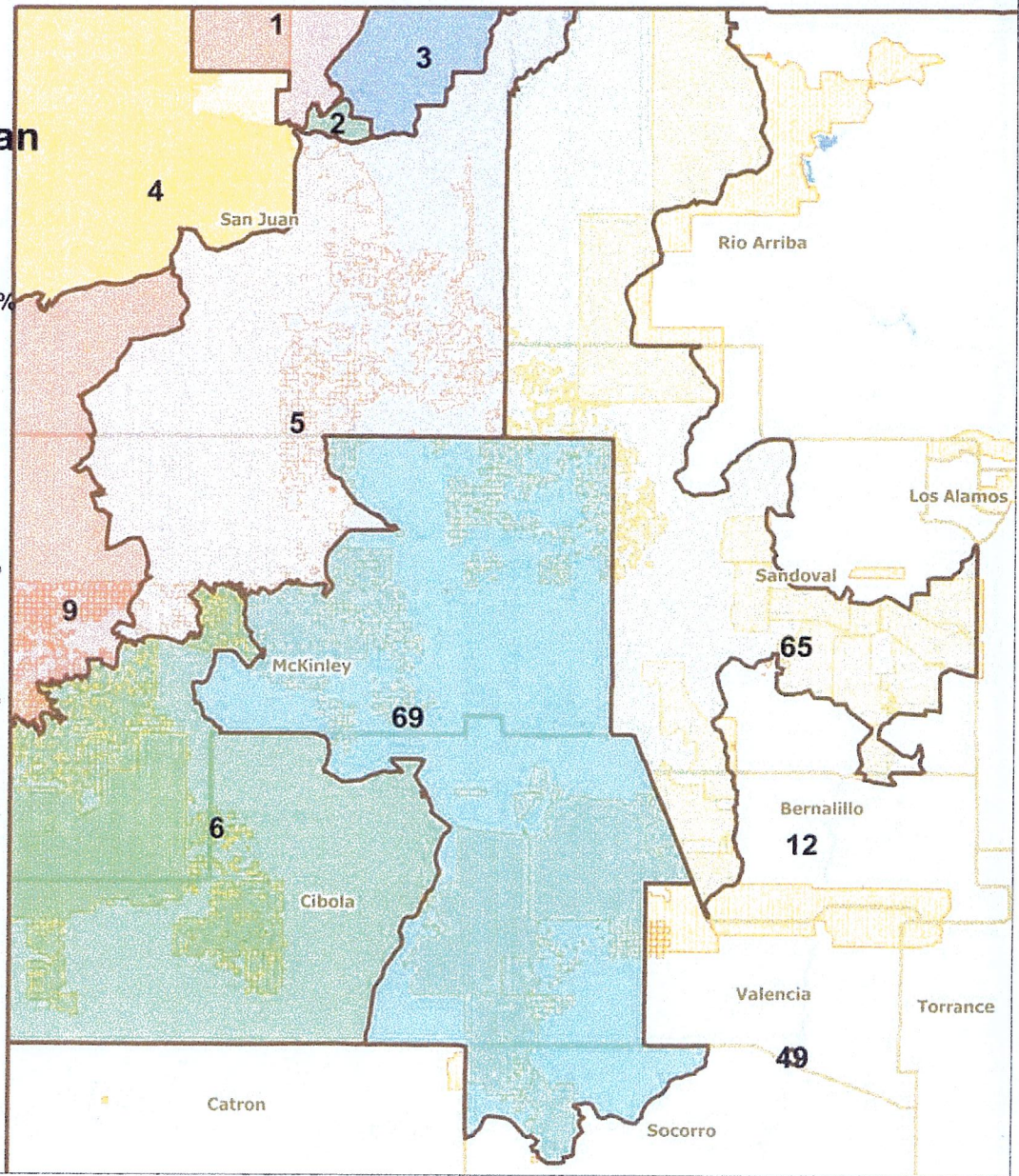


Consensus Plan Adopted By Tribal Leaders

8/29/2011

## NEW MEXICO HOUSE Proposed Native American Working Group Plan

<b>DISTRICT 1:</b> Population: 29,547 Deviation: 130 %Deviation: 0.44% %American Indian Population: 20.3%	<b>DISTRICT 6:</b> Population: 29,470 Deviation: 53 %Deviation: 0.18% %American Indian Population: 63.12%
<b>DISTRICT 2:</b> Population: 28,408 Deviation: -1,009 %Deviation: -3.43% %American Indian Population: 22.23%	<b>DISTRICT 9:</b> Population: 29,500 Deviation: -917 %Deviation: -3.12% %American Indian Population: 69%
<b>DISTRICT 3:</b> Population: 28,809 Deviation: -608 %Deviation: 2.07% %American Indian Population: 10.17%	<b>DISTRICT 65:</b> Population: 28,523 Deviation: -894 %Deviation: -3.04% %American Indian Population: 62.9%
<b>DISTRICT 4:</b> Population: 28,385 Deviation: -1,032 %Deviation: -3.51% %American Indian Population: 81.12%	<b>DISTRICT 69:</b> Population: 28,443 Deviation: -974 %Deviation: -3.31% %American Indian Population: 65.3%
<b>DISTRICT 5:</b> Population: 28,729 Deviation: -688 %Deviation: -2.34% %American Indian Population: 66.63%	





Consensus Plan Adopted By Tribal Leaders

8/29/2011

**NEW MEXICO PUBLIC REGULATORY COMMISSION  
Navajo Nation Proposal**

**District 1:**

**Population: 413,027**

**Deviation: 1,191**

**%Deviation: 0.29%**

**%American Indian Population: 4.63%**

**District 2:**

**Population: 413,678**

**Deviation: 1,842**

**%Deviation: 0.45%**

**%American Indian Population: 2.2%**

**District 3:**

**Population: 409,470**

**Deviation: -2,366**

**%Deviation: -0.57%**

**%American Indian Population: 4.13%**

**District 4:**

**Population: 415,331**

**Deviation: 3,495**

**%Deviation: 0.85%**

**%American Indian Population: 33.8%**

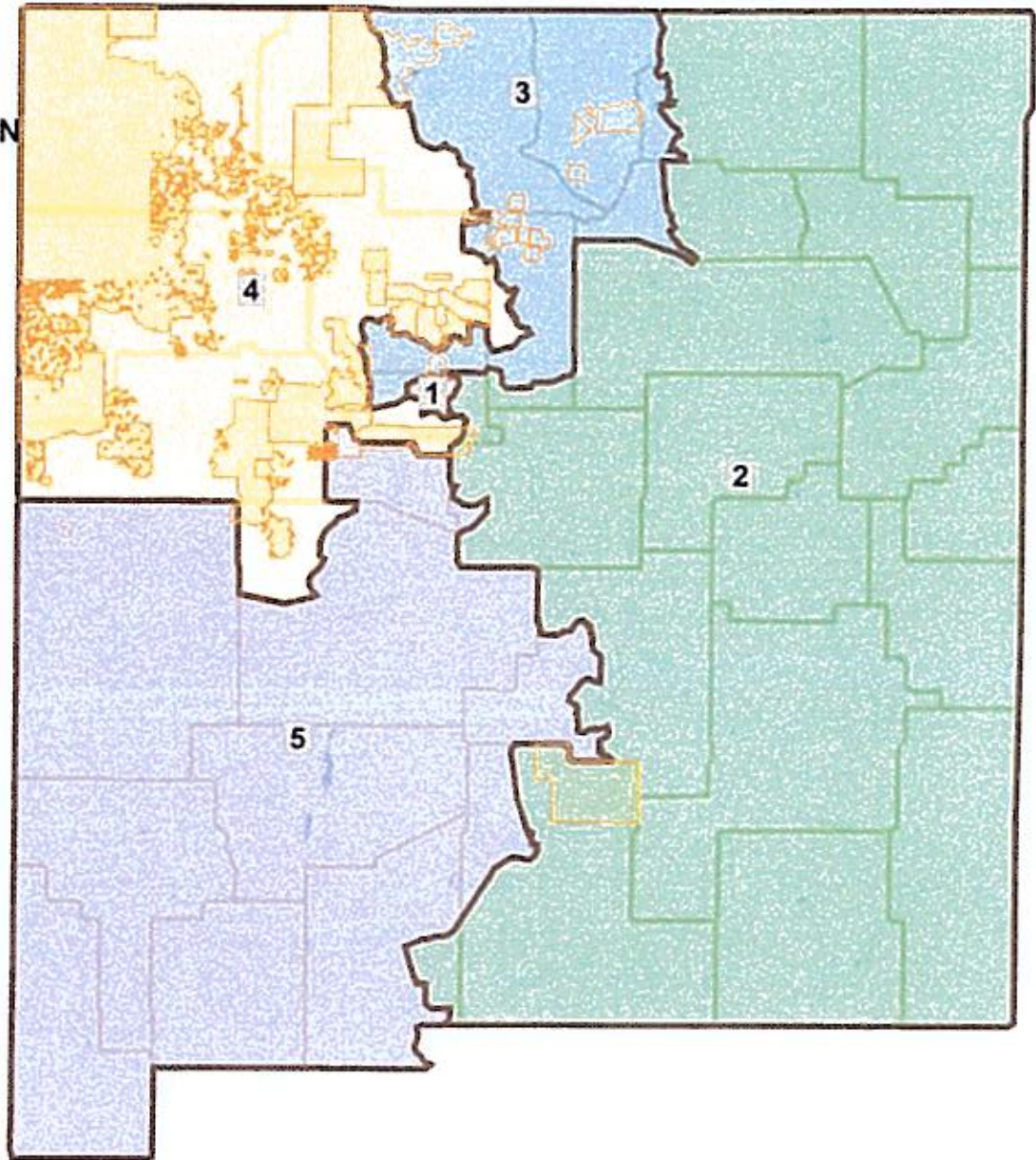
**District 5:**

**Population: 407,673**

**Deviation: -4,163**

**%Deviation: -1.01%**

**%American Indian Population: 1.88%**





# NEW MEXICO HOUSE Navajo Nation Proposal

## DISTRICT 1:

Population: 29,547

Deviation: 130

%Deviation: 0.44%

%American Indian Population: 20.3%

## DISTRICT 2:

Population: 28,408

Deviation: -1,009

%Deviation: -3.43%

%American Indian Population: 22.23%

## DISTRICT 3:

Population: 28,809

Deviation: -608

%Deviation: 2.07%

%American Indian Population: 10.17%

## DISTRICT 4:

Population: 28,385

Deviation: -1,032

%Deviation: -3.51%

%American Indian Population: 81.12%

## DISTRICT 5:

Population: 28,564

Deviation: -853

%Deviation: -2.9%

%American Indian Population: 68.89%

## DISTRICT 6:

Population: 28,022

Deviation: -1,395

%Deviation: -4.74%

%American Indian Population: 63.58%

## DISTRICT 9:

Population: 30,113

Deviation: 696

%Deviation: 2.37%

%American Indian Population: 66.13%

## DISTRICT 65:

Population: 28,523

Deviation: -894

%Deviation: -3.04%

%American Indian Population: 62.9%

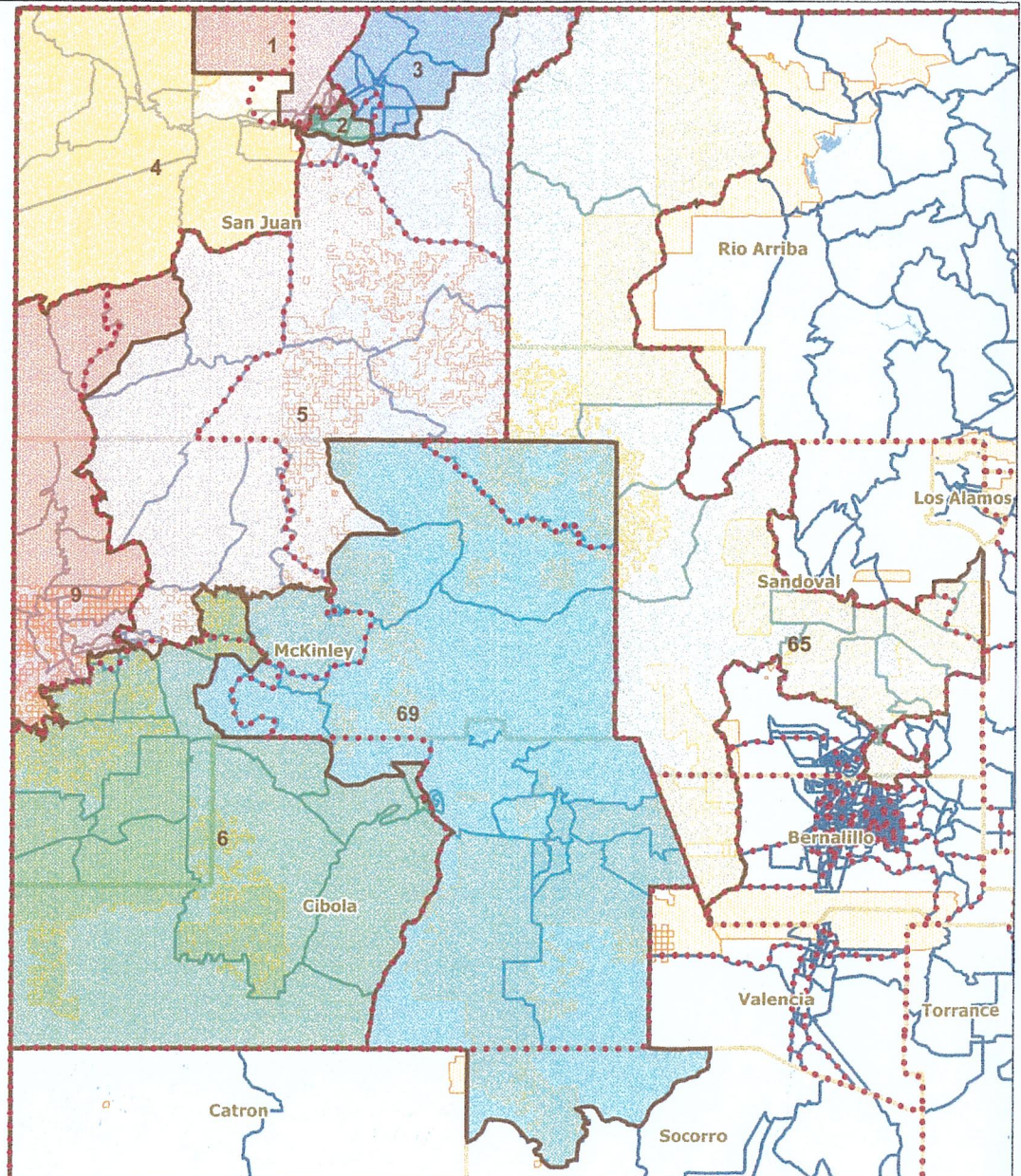
## DISTRICT 69:

Population: 28,443

Deviation: -974

%Deviation: -3.31%

%American Indian Population: 65.3%





# NEW MEXICO SENATE Navajo Nation Proposal

## DISTRICT 1:

Population: 46,647

Deviation: -2,381

%Deviation: -4.86%

%American Indian Population: 23.71%

## DISTRICT 2:

Population: 47,227

Deviation: -1,801

%Deviation: -3.67%

%American Indian Population: 13.79%

## DISTRICT 3:

Population: 47,967

Deviation: -1,061

%Deviation: -2.16%

%American Indian Population: 83.48%

## DISTRICT 4:

Population: 47,621

Deviation: -1,407

%Deviation: -2.87%

%American Indian Population: 63.56%

## DISTRICT 22:

Population: 49,400

Deviation: 372

%Deviation: 0.76%

%American Indian Population: 65.8%

## DISTRICT 30:

Population: 47,354

Deviation: -1,674

%Deviation: -3.41%

%American Indian Population: 26.49%

